

Macon County

Reporting Quarter: 4th Quarter 2007

County Profile Contact (919) 715-6374
Economic Development Contact (919) 733-4977

Demographics

Certified Population, July 2006	33,078	68
Population, 2000 Census	29,811	69
Population, 1990 Census	23,504	69
Percent population change, 1990-2000	26.8	17
Percent population change, NC, 1990-2000	21.3	

County Rank



Workforce & Education

Employment, Nov 2007	15,746	67
Unemployed, Nov 2007	641	72
Percent unemployed, Nov 2007	3.9	82
Percent unemployed, 2006	4.5	66
Percent unemployed, NC, Nov 2007	5.1	
Percent unemployed, NC, 2006	4.8	
Percent high school graduates or higher, 2000	77.3	30
Percent high school graduates or higher, NC, 2000	78.1	
Average SAT score (2400 scale), 2007	1,528	11
Average SAT score (2400 scale), NC, 2007	1,486	
Percent bachelor's degree or higher, 2000	16.2	31
Percent bachelor's degree or higher, NC, 2000	22.5	

Taxes, Sales & Services

Property taxes/\$100 Value ('07-'08)	\$0.2450
Taxable sales (Mil \$, Sept 07)	\$44.8
Taxable sales (Mil \$, FY 06-07)	\$425.8
Pharmacist/10,000 Pop, 2006	7
Physician/10,000 Pop, 2006	21
RN/10,000 Pop, 2006	60
Dentist/10,000 Pop, 2006	4
Tier designation, 2008	2
Partnership Region	Advantage West
Licensed Child Care Facilities, Sept 07	12
Child Care Slots, Sept 07	1,720

Income, Housing & Poverty

Average weekly wage per employee, 2nd Quarter 2007	\$533	67
Median household income, 2005	\$36,432	50
Per capita personal income, 2000	\$22,964	51
Per capita personal income, 2005	\$25,848	57
Per capita personal income, NC, 2006	\$32,234	
Median value of owner-occupied housing units, 2000	\$97,276	22
Median value of owner-occupied housing units, NC, 2000	\$108,300	
Percent in poverty, 2005	14.0	67
Percent in poverty, NC, 2005	14.9	

Notes: Data are the latest available at the date the profile was prepared. Demographics are from U.S. Census. Workforce & Education are from NC Employment Security Commission, U.S. Census, and NC Dept. of Public Instruction respectively; county unemployment rates are seasonally unadjusted. Average wage are from ESC's "Insured Employment and Wages in NC for Private Industry by Sector (2 digit)" which is based on the Current Population Survey." Income, Housing & Poverty are from U.S. Bureau of Economic Analysis and the U.S. Census, respectively. Jobs and Investments are from NC Dept. of Commerce. Closings & Layoffs by effective date are from the NC Employment Security Commission. Employment & Wages are from NCEC's "Insured Employment and Wages in NC for Industry by Sector (2 digit)" series; missing data or * indicates data not available or suppressed for confidentiality reasons. Taxes are from the NC Dept. of Revenue and prior to 7/05 represent gross sales but after are taxable sales. Medical data from the Cecil G. Sheps Center for Health Services Research, UNC-Chapel Hill. **County Ranking 1=highest.

Announced Jobs & Investments

Jobs announced, 2006	100
Jobs announced, Thru Oct 12, 2007	50
Total investment announced, 2006	\$50,000,000
Total investment announced, Thru Oct 12, 2007	\$3,000,000

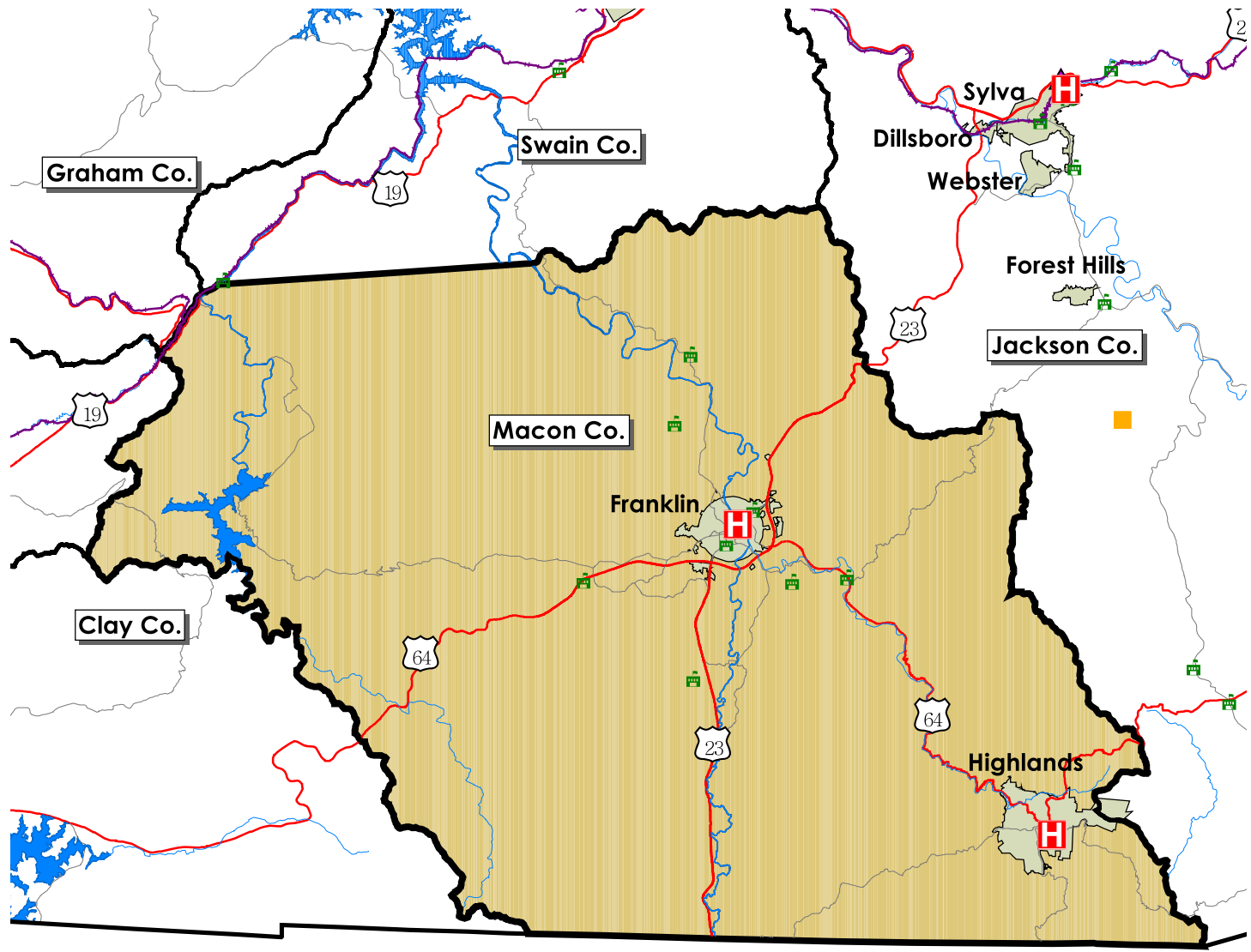
Announced Closings & Layoffs

Number of affected establishments, 2006	1
Number of affected establishments, Thru Dec 2007	0
Job losses, 2006	0
Job losses, Thru Dec 2007	0

Employment and Wages, by Sector (2nd Quarter 2007)

	Macon			North Carolina		
	Avg Emp	% Total	Avg Wkly Wage	Avg Emp	% Total	Avg Wkly Wage
Total All Industries	11,971	100.0	\$533	4,070,849	100.0	\$718
Total Government	1,746	14.6	\$623	678,349	16.7	\$754
Total Private Industry	10,225	85.4	\$518	3,392,501	83.3	\$711
Agriculture Forestry Fishing & Hunting	37	0.3	\$462	30,294	0.7	\$517
Mining	0	0.0	\$0	4,055	0.1	\$1,176
Utilities	0	0.0	\$0	13,939	0.3	\$1,378
Construction	1,542	12.9	\$552	255,709	6.0	\$729
Manufacturing	950	7.9	\$602	537,281	13.2	\$876
Wholesale Trade	160	1.3	\$609	182,823	4.5	\$1,021
Retail Trade	1,903	15.9	\$444	462,301	11.4	\$468
Transportation and Warehousing	122	1.0	\$571	115,772	2.8	\$721
Information	158	1.3	\$539	72,926	1.8	\$1,025
Finance and Insurance	333	2.8	\$753	152,965	3.8	\$1,183
Real Estate and Rental and Leasing	172	1.4	\$415	54,786	1.3	\$673
Professional and Technical Services	709	5.9	\$603	182,439	4.5	\$1,082
Management of Companies and Enterprises	0	0.0	\$0	69,658	1.7	\$1,374
Administrative and Waste Services	300	2.5	\$549	243,995	6.0	\$505
Educational Services	0	0.0	\$0	57,097	1.4	\$711
Health Care and Social Assistance	1,469	12.3	\$595	434,459	10.7	\$688
Arts, Entertainment and Recreation	385	3.2	\$509	53,965	1.3	\$551
Accommodation and Food Services	1,107	9.2	\$282	346,693	8.5	\$260
Other Services Ex. Public Admin	441	3.7	\$450	103,559	2.5	\$475
Public Administration				228,584	5.6	\$765
Unclassified	97	0.8	\$449	17,783	0.4	\$651

Trends Profile Map Macon County



Legend

-  Public Schools
-  Airports
-  Hospitals
-  Colleges and Universities
-  Community Colleges
-  Rail Lines
-  Interstate highways
-  US Highways
-  State and County Highways
-  Major Rivers and Streams
-  Major Waterbodies
-  Municipal Boundaries



Macon County

Employment Characteristics

Reporting Quarter: 4th Quarter 2007

County Profile Contact (919) 715-6374

Commerce Economic Development Contact (919) 733-4977

Employment Security Commission (919) 733-2936

Top Manufacturers (2nd Quarter 2007)

ZICKRAF ENTERPRISES INC	250-499
WHITLEY PRODUCTS	100-249
CATERPILLAR INC	100-249
TEKTONE SOUND & SIGNAL MFG INC	50-99
CR FRANKLIN INC	Below 50
COOK BROTHERS LUMBER CO INC	Below 50
FRANKLIN LUMBER & KILN CO INC	Below 50
GOSHEN TIMBER FRAMES	Below 50
ROCKS	Below 50
SOUTHDOWN, INC	Below 50

Employment Range



Top Non-Manufacturing Employers (2nd Quarter 2007)

MACON COUNTY PUBLIC SCHOOLS	500-999
DRAKE ENTERPRISES LTD (A CORP)	250-499
MACON COUNTY	250-499
ANGEL MEDICAL CENTER	250-499
HIGHLANDS CASHIERS HOSPITAL INC	250-499
WAL-MART ASSOCIATES INC	100-249
PAPCO/CENTRAL DIVISION	100-249
LOWES HOME CENTERS INC	100-249
INGLES MARKETS INC	100-249
BRITTHAVEN INC	100-249

Employment Range

Industry

Education and Health Services
Professional and Business Services
Public Administration
Education and Health Services
Education and Health Services
Trade, Transportation, and Utilities
Construction
Trade, Transportation, and Utilities
Trade, Transportation, and Utilities
Education and Health Services